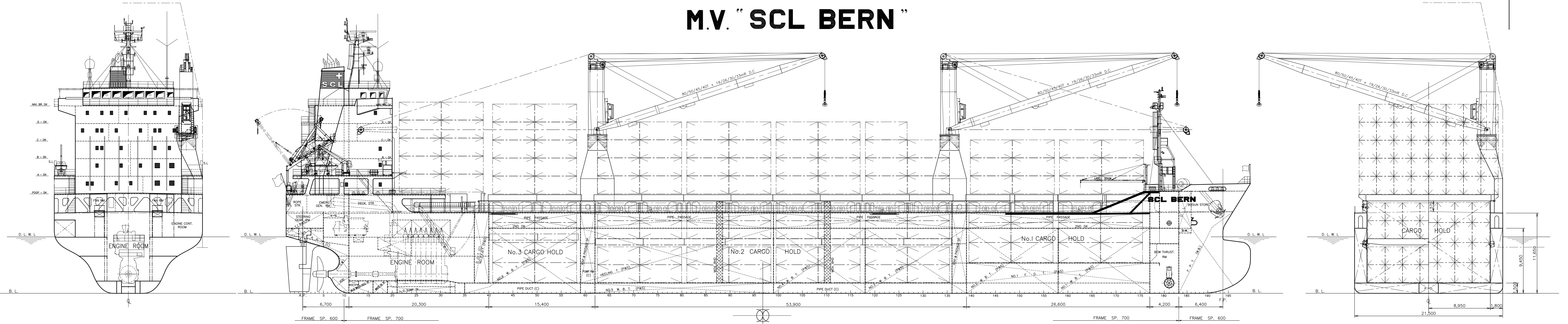
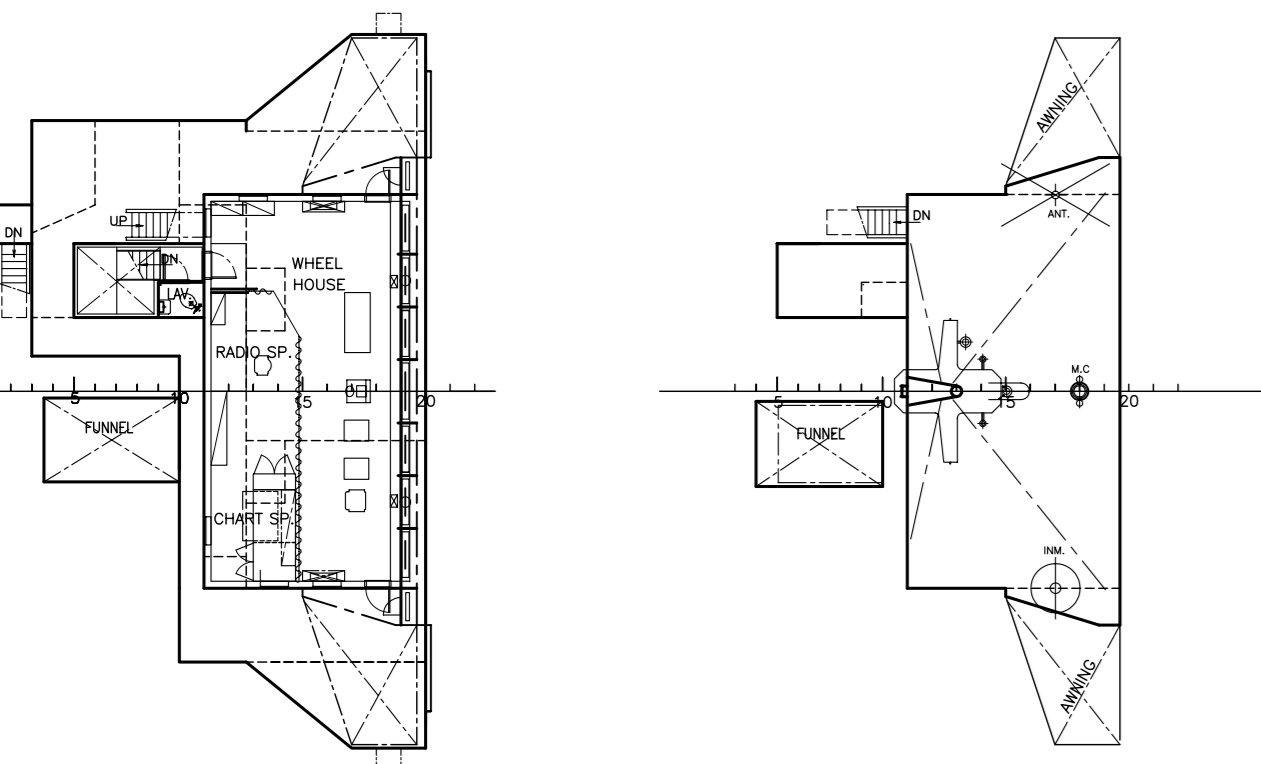


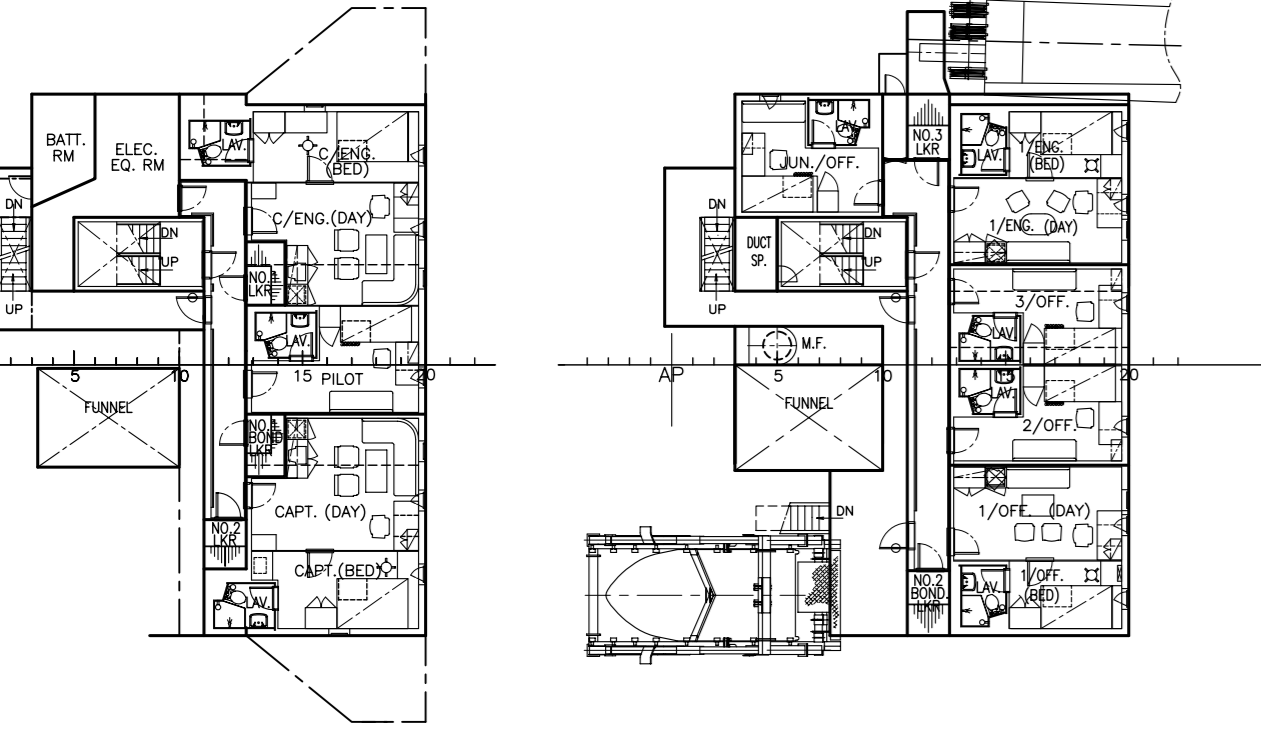
GENERAL ARRANGEMENT M.V. "SCL BERN"



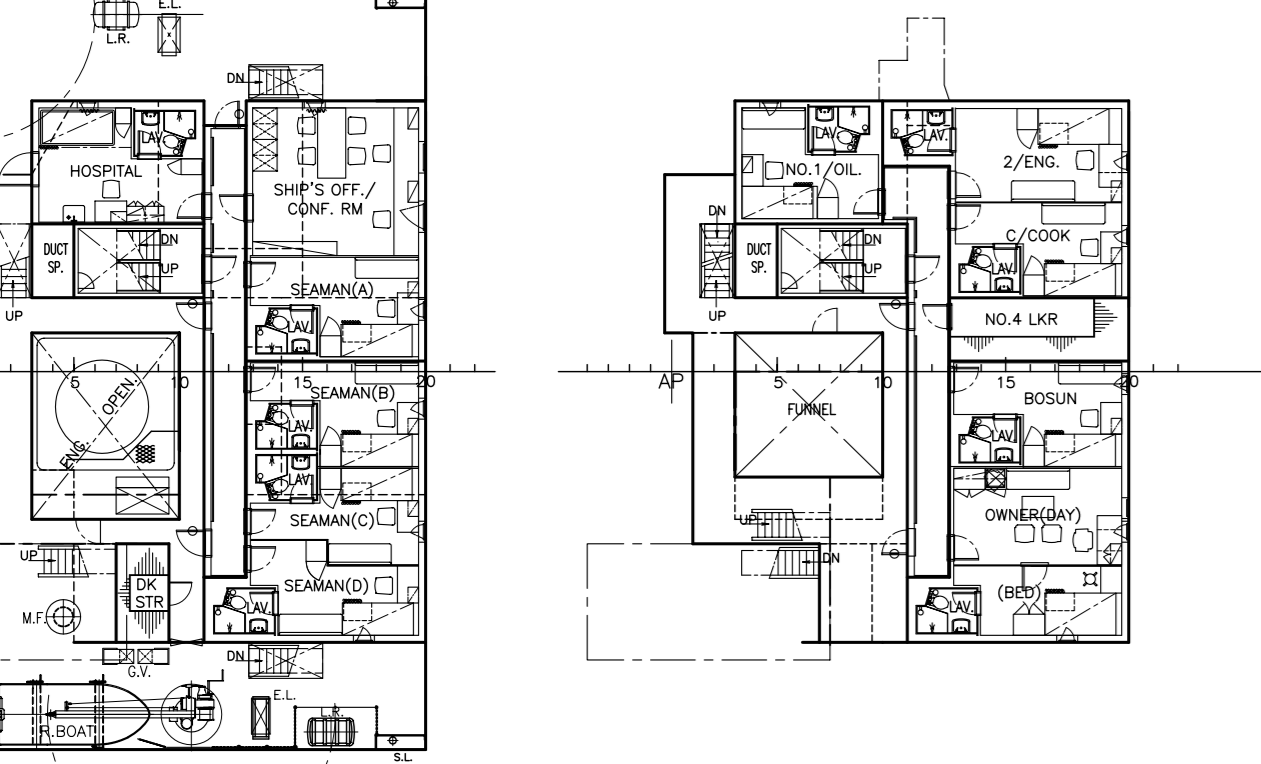
NAV. BR. DK. COMPASS DK.



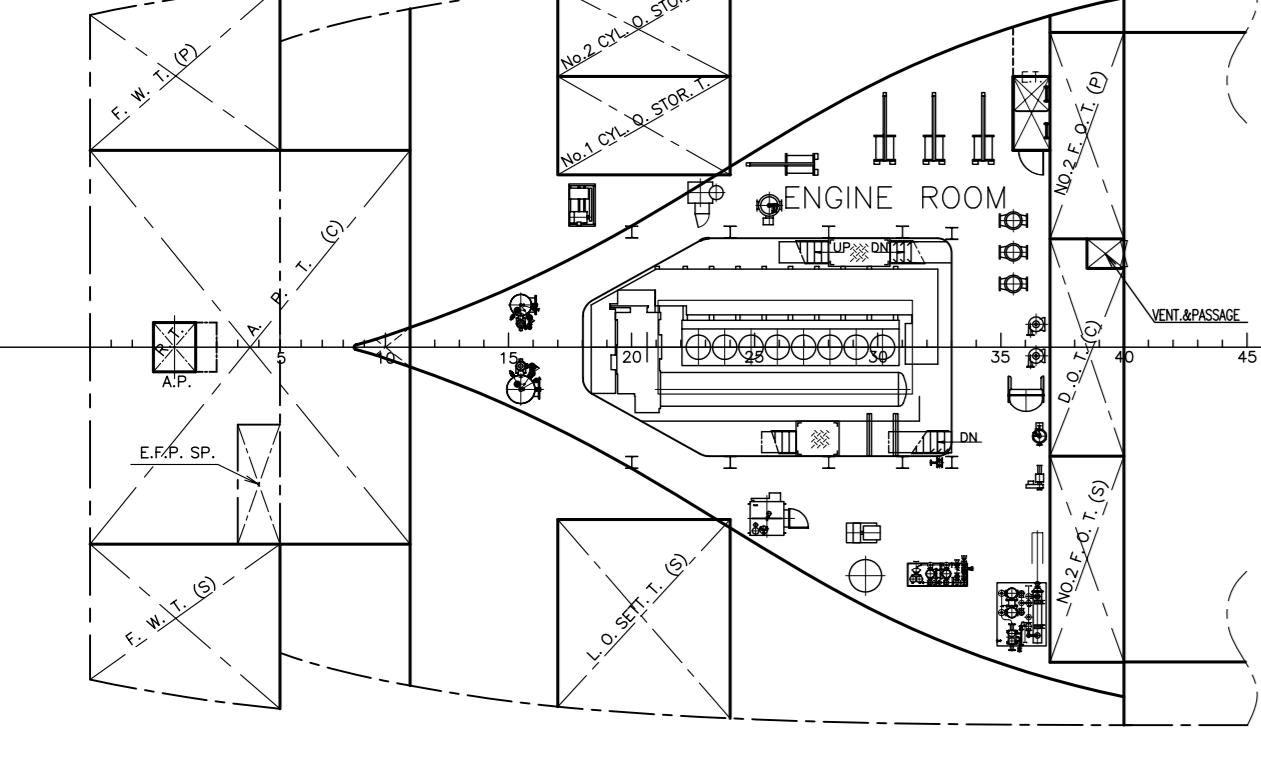
D - DECK C - DECK



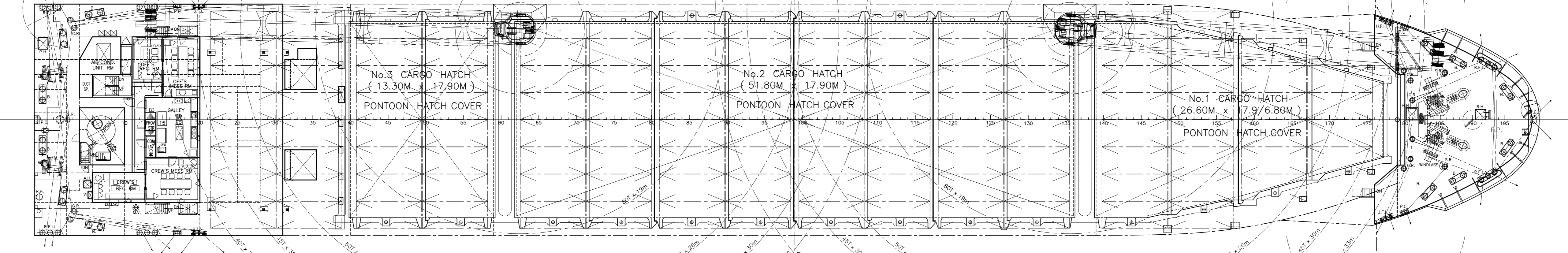
A - DECK B - DECK



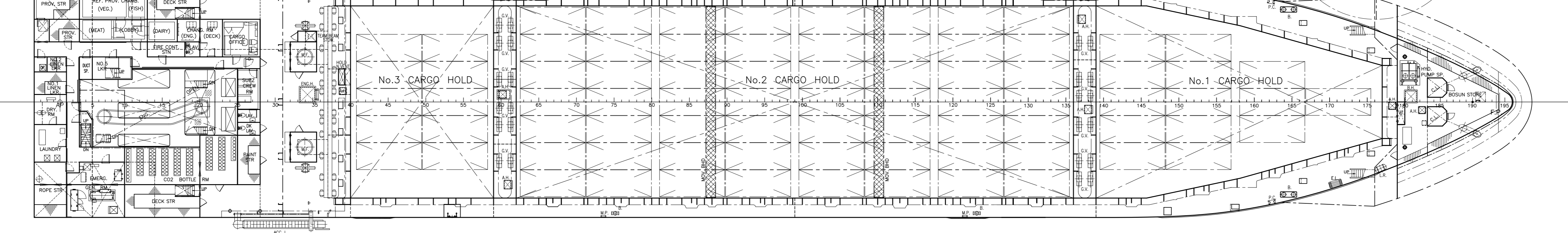
3RD DECK



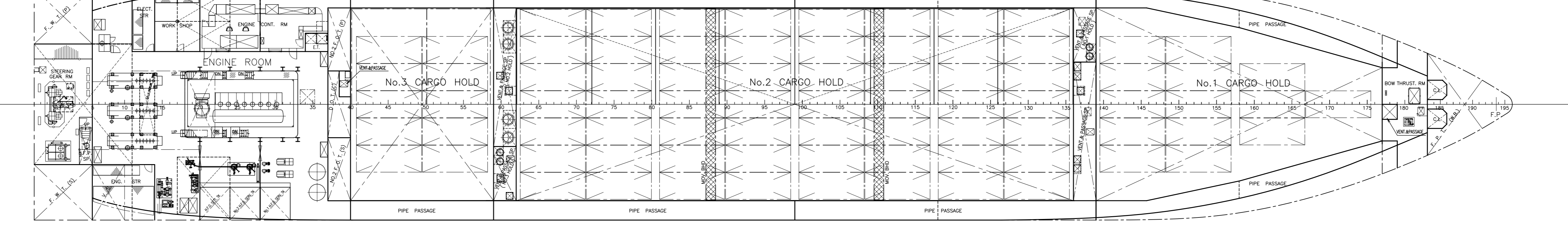
POOP DECK HATCH COVER TOP 'CLE DECK



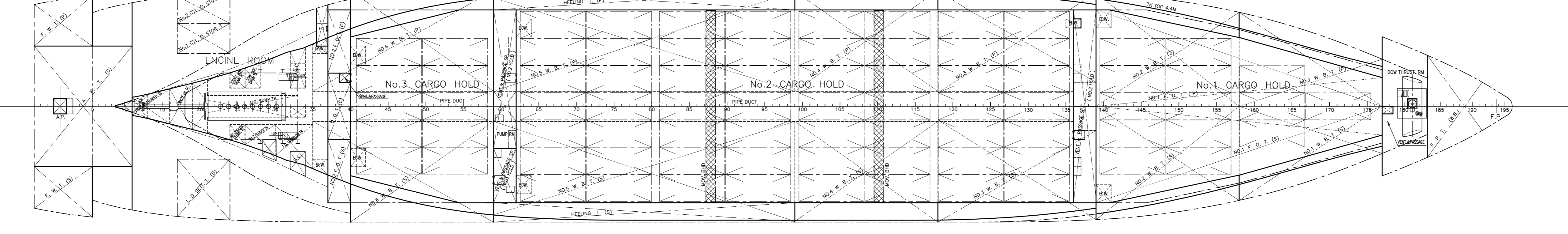
UPPER DECK



2ND DECK



TANK TOP



PRINCIPAL PARTICULARS	
LENGTH (O.A.)	139.99 m
LENGTH (B.P.)	133.50 m
BREADTH (MID.)	21.50 m
DEPTH (MID.)	11.65 m
DESIGNED DRAFT (MID.)	8.20 m
SCANTLING DRAFT (MID.)	8.40 m
GROSS TONNAGE (INTERNATIONAL) obt. 9,990	
DEADWEIGHT (DESIGNED) obt. 12,000 MT	
DEADWEIGHT (SCANTLING) obt. 12,500 MT	
HOLD CAPACITY GRAIN obt. 17,010 m³	
CONTAINER CAPACITY (ON HATCH COVER) obt. 460 TEU	
(IN HOLD) obt. 306 TEU	
TOTAL obt. 766 TEU	
MAIN ENGINE MAN B&W 8S42MC Mk6 x 1 set	
M.C.O. 8,200 kW x 136 rpm	
NORMAL (90% M.C.O.) 7,380 kW x 131 rpm	
SERVICE SPEED (DESIGNED DRAFT) obt. 17.0 knots	
FLAG SWISS	
CLASS & NOTATION Lloyd's Register of Shipping +100A1, Ice Class 1C, Strengthened for heavy cargoes, Container cargoes in all holds and on upper deck and all hatch covers, U, +LMC, UMS	

COMPLEMENT		
OFFICER CLASS		8 P
CREW CLASS		7 P
OWNER		1 P
PILOT		1 P
TOTAL		17 P

MESSRS.	NAME OF SHIP	SHIP No.
SCL BERN AG	SCL BERN	455
PLAN NAME		
GENERAL ARRANGEMENT		
DW 12,000MT TYPE MULTI-PURPOSE CARGO VESSEL		
SCALE: 1/200	DWG NO.: C02-002	DATE OCT. 1, 2004
DESIGN DIVISION FUNDAMENTAL DESIGN DEPARTMENT KYOKUYO SHIPYARD CORPORATION, JAPAN		